



advanced  
tracking



KONECTIS

by Advanced Tracking

TUTORIAL TRACKING APPLICATION

[www.konectis.com](http://www.konectis.com)



advanced  
tracking



PAGE 3: LOGIN  
PAGE 4: HOME PAGE  
PAGE 5 : MAP SETTINGS  
PAGE 6: ASSETS  
PAGE 7: ASSET INFORMATION  
PAGE 8: CONTACT ALERTS & GRIB FILES  
PAGE 9: EDIT CONTACT ALERTS  
PAGE 10: EDIT GRIB FILES  
PAGE 11: ASSET PERMISSIONS  
PAGE 12: EDIT ASSET PERMISSIONS  
PAGE 13: LAST POSITION  
PAGE 14: DEVICE STATUS  
PAGE 15: HISTORY SETTINGS ON MAP  
PAGE 16: GEOFENCING  
PAGE 17: GEOFENCING: CREATE OR EDIT ZONE  
PAGE 18/19/20: SHARING MY POSITION  
PAGE 21: TUTORIAL & IRIDIUM SMS  
PAGE 22: PROFILE & INVOICE SETTINGS  
PAGE 23: CONTACT ADVANCED TRACKING



advanced tracking



IDENTIFIANT MEMBRE

Nom d'utilisateur

Mot de passe

Login

Mot de passe perdu ?

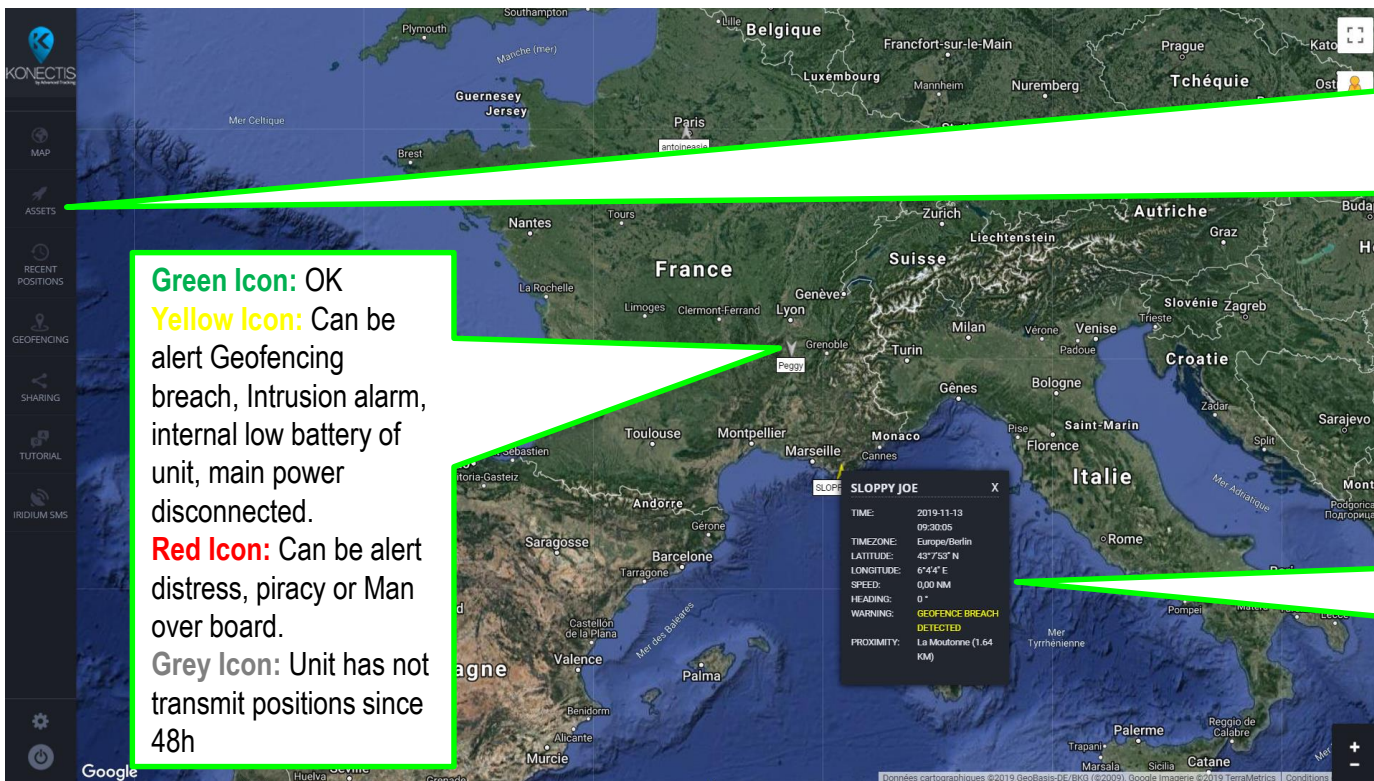
Responsive design. No need of application. Works on PC, Mac, Iphone, Smartphone and tablets

Multilinguals:  
English,  
French, Polish,  
German,  
Spanish

Simple and secure connection  
Enter login and password



# Home page



**Green Icon:** OK

**Yellow Icon:** Can be alert Geofencing breach, Intrusion alarm, internal low battery of unit, main power disconnected.

**Red Icon:** Can be alert distress, piracy or Man over board.

**Grey Icon:** Unit has not transmit positions since 48h

On this page you can select:

- Map
- Assets
- Recent positions
- Geofencing
- Sharing
- Tutorial
- Iridium SMS
- Profile
- Log out

When you click on selected asset, you will have pop-up window with information about position, time, speed, proximity, alert status



# Map settings

- On this page you can select:
- setting of map or type of map.
  - show weather information
  - See coordinates
  - Measure distance between two points



# Assets

The screenshot shows the KONECTIS 'Assets' management interface. On the left is a dark sidebar with a search bar and a list of assets. The main area is a satellite map of Europe with a yellow pin labeled 'SLOPPY JOE' in the Mediterranean region. A search bar at the top left of the map area contains the text 'SLOPPY JOE'. A search icon is visible to the right of the search bar.

Select asset to manage – a new window will open

Select to zoom to unit on map, or zoom out, or hide unit from map

- On this page you can select:
- Search for asset.
  - Select asset
  - At bottom of list, you can select: Show all assets on map, Remove all assets from map, Center map on visible assets



## Assets Management – Asset information

The screenshot shows the 'ASSETS' management page for an asset named 'SLOPPY JOE'. The left sidebar contains navigation options: MAP, ASSETS, RECENT POSITIONS, GEOFENCING, SHARING, TUTORIAL, and IRIDIUM SMS. The 'ASSETS' section is active, displaying the following information:

- Name: SLOPPY JOE
- Type: yacht
- Flag: [dropdown menu]
- Registration: [input field]
- Communication on board: [input field]
- Confirm Satellite phone n°: [input field]
- Call sign: [input field]
- MMSI Number: [input field]
- Only if any other distress beacon: [checkbox]
- Electronic on board: [input field]
- Type and model: [input field]
- EPIRB: [input field]
- Life Raft: [input field]
- Type and model: [input field]
- Vessel Type: [input field]
- Model: [input field]

The main area displays a satellite map of Europe and the Mediterranean region. A yellow location pin is placed over France, with a tooltip showing 'SLOPPY JOE' and a small boat icon. A green line points from the 'Type: yacht' field in the sidebar to the tooltip on the map.

On this page you can:  
- Modify Asset information



## Assets Management – Contact Alerts & Grib Files

**KONECTIS** SLOPPY JOE  
Manage your asset

**ASSET INFORMATION**

**CONTACT ALERTS & GRIB FILES**

Id	Type	Tel/Email	Name	Events	Edit	Delete
1	sms	33611786967	Christophe	weather forecast	Edit	Delete
2	email	christopheallan@gmail.com	CHRISTOPHE	weather forecast	Edit	Delete

Page 1 of 1, showing 2 records out of 2 total, starting on record 1, ending on 2.

ASSET PERMISSIONS

LAST POSITION

DEVICE - T580 864768010973482

HISTORY SETTINGS ON MAP

HISTORY LOG

EXPORT LOG

On this page you can:  
- Edit, delete or add contact for Alerts and weather GRIB files





# Assets Management – Edit Contact Alerts

On this page you can:

- Add contact for alerts
- Add email or sms for reception alert
- Select events you want to receive alerts

**Important:**  
If you do not want to receive specific alert anymore, just unclick them in EVENTS and you will not receive them!

Click on edit contact to save

Select to receive weather Grib Files to your email address



# Assets Management – Edit Grib Files

**SUBSCRIPTION SCHEDULE**  
 Timezone: UTC  
 Send at:  00:00  06:00  12:00  18:00  
 Start date (optional): YYYY-MM-DD End date (optional): YYYY-MM-DD

**WEATHER PARAMETERS**  
 Mean sea-level pressure  
 Sea-surface temperature  
 Air temperature (2-meter altitude)  
 500mb height  
 Gradient surface (10-meter) wind  
 Wave height

**FORECASTS INCLUDED**  
 0 (current conditions)  +6 hours  
 +12 hours  +18 hours  +24 hours  
 +36 hours  +48 hours  +60 hours  
 +72 hours  +84 hours  +96 hours

**SPATIAL (AREA) FILTER**  
 Spatial filter: enabled (dynamic area around asset)  
 Latitude radius: 10° Latitude step: 2°  
 Longitude radius: 10° Longitude step: 2°

Buttons: CANCEL, ADD CONTACT, SEND FORECAST NOW

Select dynamic zone if you want the Grib file to be updated with your latest position

Select radius and precision (step)

- On this page you can:
- Select when you want to receive grib file
  - Start and stop date
  - Select weather parameters
  - Select forecasts up to 96h

**Important:**  
 You need on board a satellite receiver (Iridium GO) if you want to receive weather Grib files Offshore!



advanced tracking



## Assets Management – Asset Permissions

**KONECTIS** SLOPPY JOE  
Manage your asset

ASSET INFORMATION

CONTACT ALERTS & GRIB FILES

ASSET PERMISSIONS

User: sloppyjoe

Permissions: View position list, Manage users, Manage contacts, Manage Geofencing, View weather, Manage Assets	Edit
	Delete
	permissions

Page 1 of 1, showing 1 records out of 1 total, starting on record 1, ending on 1

Add permissions

LAST POSITION

DEVICE - TS80 864768010973482

HISTORY SETTINGS ON MAP

HISTORY LOG

EXPORT LOG

On this page you can:

- Edit, delete or add permissions for other users



## Assets Management – Edit Asset Permissions

Add permission to existing username

If Username does not exist you need to select new user create username above, create password, add email of user for this username

Select permission you allow. Note you can't give more permissions than for your account. Admin can allow any permissions.



## Assets Management – Last position

**SLOPPY JOE**  
Manage your asset

**ASSET INFORMATION**

**CONTACT ALERTS & GRIB FILES**

**ASSET PERMISSIONS**

**LAST POSITION**

Date: 2019-11-14 10:19:50  
Timezone: Europe/Berlin  
Latitude: 43° 7' 52" N  
Longitude: 6° 4' 4" E  
Speed: 0 NM  
Heading: 0°  
**WARNING: GEOFENCE BREACH DETECTED**  
Proximity: La Moutonne (1.60 KM)

**DEVICE - T580 864768010973482**

**HISTORY SETTINGS ON MAP**

**HISTORY LOG**

**EXPORT LOG**

This will inform you about last position of unit and status. It will not automatically update like on map





# Assets Management – History settings on map

**SLOPPY JOE**  
Manage your asset

ASSET INFORMATION

CONTACT ALERTS & GRIB FILES

ASSET PERMISSIONS

LAST POSITION

DEVICE - T580 864768010973482

**HISTORY SETTINGS ON MAP**

Show asset on map:

Limit number of last positions to: **1**

Timezone: Europe/Berlin

Date From: 2019-07-18 Time From: 00:00:00

Date To: YYYY-MM-DD Time To: HH:MM:SS

Save as default: \*

**SUBMIT**

\* Saving default map preferences is only possible when number of last positions is greater than zero.

HISTORY LOG

EXPORT LOG

- Select show asset on map
- Select limit of positions to be shown on map
- Define date to start and end date if necessary
- If you select default, you will see history trace at each new login for this unit. Be aware that if you have put dates and select default you may not see last positions anymore on map!



# Geofencing

**Geofencing**  
Manage permitted or prohibited geographic areas of your assets

MAP	ASSETS	RECENT POSITIONS	GEOFENCING	SHARING	TUTORIAL	IRIDIUM SMS
Name: <i>Notre Dame</i> Assets: <i>Christophe</i> Type: <i>Going outside zone</i> Schedule: <i>Schedule Is Always</i> Active: <i>No</i>	Name: <i>PORT DE HYERES</i> Assets: <i>SLOPPY JOE</i> Type: <i>Going outside zone</i> Schedule: <i>Schedule Is Always</i> Active: <i>Yes</i>	Page 1 of 1, showing 2 records out of 2 total, starting on record 1, ending on 2	<a href="#">Create geofence</a>			

- Create, Edit or delete geofencing





# Geofencing: create zone

**Geofencing**  
Manage permitted or prohibited geographic areas of your assets

**GEOFENCE**  
Name: Winter Zone

**ASSETS**  
 Christophe  
 SLOPPY JOE  
 Téléphone MI A2 Lite  
 Téléphone MI A2 Lite  
 Téléphone MI A2 Lite  
 Téléphone MI A2 Lite

**Type:**  
Going outside zone

**COORDINATES**  
 1. 43°7'52.61" N 6°3'57.6" E  
 2. 43°7'56.52" N 6°4'2.66" E  
 3. 43°7'54.51" N 6°4'9.27" E  
 4. 43°7'50.1" N 6°4'5.27" E

**SCHEDULE**  
Schedule Is Always Active

**ACTIVE**

**Buttons:** CANCEL, CREATE GEOFENCE

**Callout 1:** Give name of zone  
Select unit that needs to be related to this zone

**Callout 2:** Create zone by clicking on map – you will see yellow icons. Minimum 3 icons needed. You can move icons and when double click on icon, it will delete.

**Callout 3:** Select if you want to receive alert if unit is going out or in defined zone

**Callout 4:** Select if you want always active or in defined dates.

**Callout 5:** Click on active if you want zone to be active or unclick if you want to deactivate zone but keep it for next use

**Callout 6:** Confirm by create zone



## Sharing

**Share your position**  
Manage your map sharing widget

You can add this widget to your site and share with your friends.

[Id ↑](#) [Zoom Level Active](#)

Assets: *SLOPPY JOE*  
Map: *OpenSeaMap*  
Constant zoom: *10*  
Show history: *Yes*  
Days back: *180*  
Date from: *2019-08-04 00:00:00*  
*Europe/Berlin*  
Date to: *2019-08-05 23:59:59*  
*Europe/Berlin*  
Active: *Yes*

[View](#)  
[Edit](#)  
[Delete](#)

Page 1 of 1, showing 1 records out of 1 total, starting on record 1, ending on 1

[Create sharing widget](#)

- This page allows you to setup a link for sharing your positions with friends and family.
- It also allows to have an API key for integration in Website or Blog



# Sharing

**Share your position**  
Manage your map sharing widget

**ASSETS**

- Christophe  SLOPPY JOE
- Téléphone Mi A2 Lite
- Téléphone Mi A2 Lite
- Téléphone Mi A2 Lite
- Téléphone Mi A2 Lite

**HISTORY**

Show history:

**WIDGET SETTINGS**

Map: OpenStreetMap

Zoom level: Closest zoom

Center to: full asset history

Lines history decoration: with arrows

Show current weather conditions:  temperature  wind  pressure

Width: 0 Height: 0

Active:

CANCEL CREATE SHARING WIDGET

**Callouts:**

- Select unit you want to share.
- Select of your want to share history trace on map. Select date to start and number of days of history to be shown.
- Select several options you want
- Select weather information if necessary
- Select size of map. We recommend 720 x 600
- Click on active. If not clicked, sharing link will not work.
- Validate here



# Sharing

**Share your position**  
Manage your map sharing widget

Please copy/paste following HTML to include sharing widget on your website. Depending on your requirements widget is available in 2 versions.

**1. WIDGET CODE (NO SSL)**

```
<iframe width="720" height="600" src="http://www.konectis.com/embed/4f54e2c637de13cddc4f2e0365564000" frameborder="0"></iframe>
```

Default option. Loading widget is faster (good for mobile clients with poor quality Internet connection).

**2. WIDGET CODE (WITH SSL)**

```
<iframe width="720" height="600" src="https://api.whatusea.com/embed/4f54e2c637de13cddc4f2e0365564000" frameborder="0"></iframe>
```

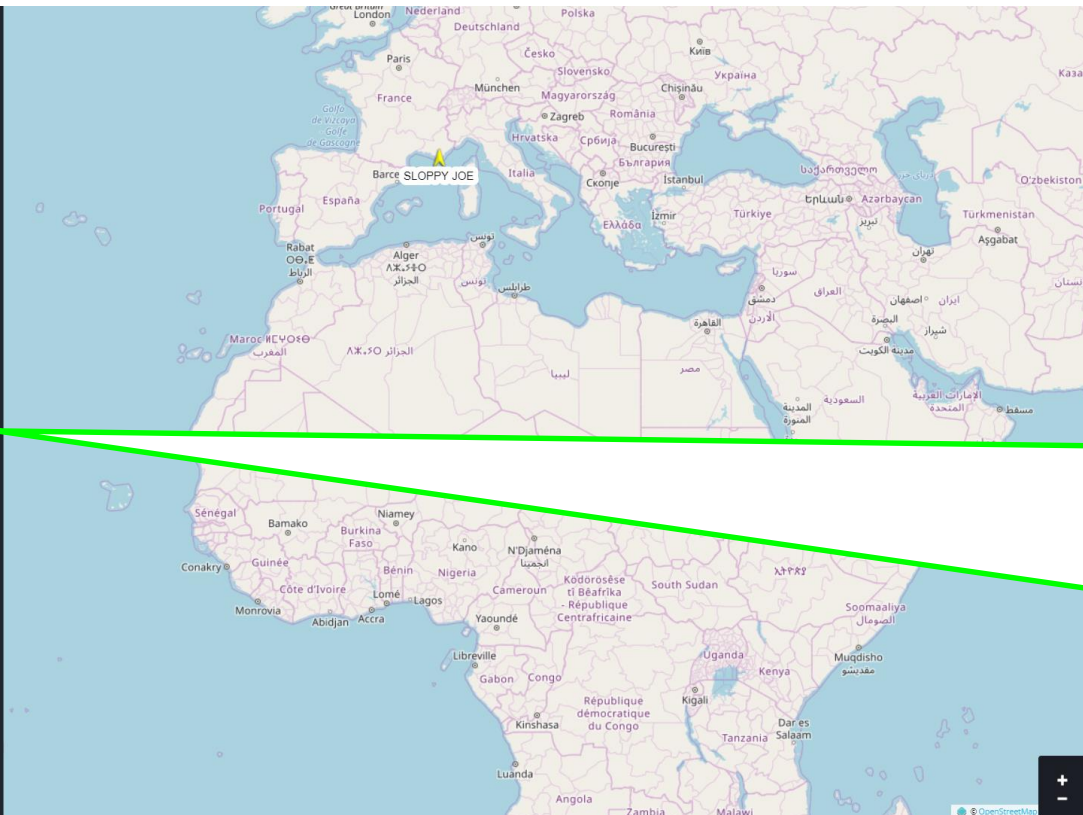
Required for websites that use SSL/HTTPS already. Loading is secure (encrypted data connection).

**RELATED ASSETS**

- SLOPPY JOE

**ACTIONS**

[Edit](#) | [List](#) | [Delete](#)



- Once validated you will get API key for blog or website. It is better to chose with SSL.
- You can select link like this:  
<https://api.whatusea.com/embed/4f54e2c637de13cddc4f2e0365564000> – to share with your family or friends.



## Tutorial & Iridium sms

Appuyez sur F11 pour quitter le mode plein écran.

**SLOPPY JOE**

TIME:	2019-11-13 09:30:05
TIMEZONE:	Europe/Berlin
LATITUDE:	43°7'53" N
LONGITUDE:	6°44' E
SPEED:	0.00 NM
HEADING:	0°
WARNING:	

- Tutorial page

- Iridium SMS: will allow users to send free sms messages to owners with Iridium phone or Iridium GO

- Manage Profile



# Profile & invoice Settings

**Profile**  
Manage account and invoice details

**PROFILE**

**ACCOUNT SETTINGS**

Email: christopheallan@gmail.com

Language: English

Timezone: Europe/Berlin

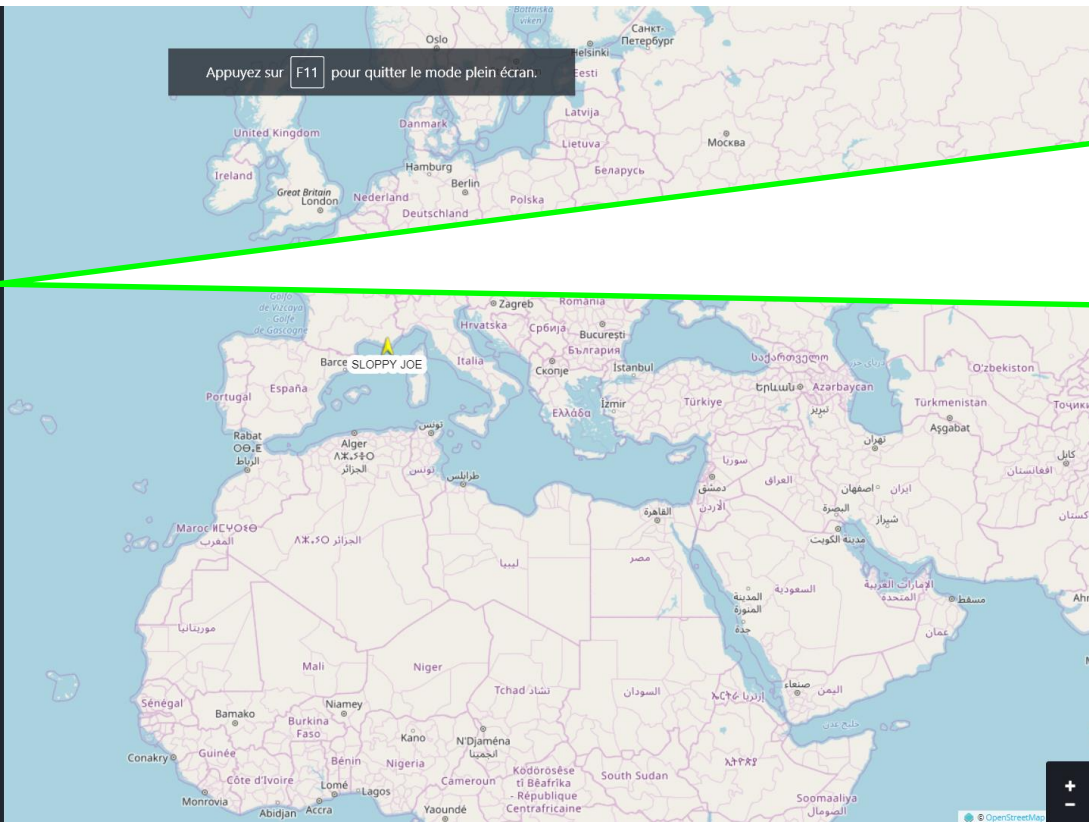
**PASSWORD CHANGE**

Current password: [input]

New password: [input]

New password (repeat): [input]

**INVOICE DETAILS**



- Complete here your profile details: Email Language Timezone (units are sending positions in UTC time – this will allow to see positiond in your time zone stamp)
- Change password
- Complete invoice details



advanced  
tracking



ADVANCED TRACKING

51 rue du port de la plage  
83400 Hyères  
FRANCE

Email : [commercial@advanced-tracking.com](mailto:commercial@advanced-tracking.com)

Tel : + 33 (0) 494 231 551

To know more about our services : [www.advanced-tracking.com](http://www.advanced-tracking.com)